



MESA MANUFACTURING MONTHLY

NOVEMBER 2010

Autodesk
Gold Partner
Manufacturing

Autodesk
Authorized Developer

Autodesk
Authorized Training Center
Authorized Certification Center



MESA U 2010

MESA U 2010 is a one-day technical event that will be held on November 23rd at the Consol Energy Center, new home of the Pittsburgh Penguins, in downtown Pittsburgh.

MESA U 2010 will be your chance to attend technical sessions on the Autodesk products you use every day and is an excellent alternative for those who cannot attend Autodesk University in Las Vegas later in November.

Our goal is that each attendee leaves this event with useful technical instruction, new techniques and updated methods of how to use the manufacturing software they already have. Each session is being developed by members of our technical staff and those of our partners specifically for this event.

Those interested in the hands-on classes are encouraged to register as soon as possible, as those courses have a limited number of computers available. The schedule may change based on the level of interest in certain classes. We will do our best to provide every attendee with the course schedule they desire.

We want to make this distinction clear: If you are looking for new product information (such as our free annual software release sessions) or a sales presentation, you should pass on this event and contact your MESA salesperson to schedule a software demonstration.

We already have registered attendees traveling all the way from Ohio, Virginia, Kentucky and Alabama.

We hope to see you at MESA U 2010 on November 23rd!

Pricing:

Customers \$150 per person (3 or more \$99 each)
Non-Customers \$250 per person (3 or more \$199 each)

Vendors:

Autodesk
Catalyst Connection
3DConnexions
InventorCAM

Event Schedule

8:00-8:45	Sign-In and Welcome Breakfast			
8:45-9:00	Introduction to MESA U 2010			
9:00-9:50	MFG-05 Working with Neutral File Formats	FD-01 How to Apply Factory Design Suite to Your Company	DM-01 How Well Do You Know Your Properties?	MFG-14 Catalyst Connection for Manufacturers
10:00-10:50	MFG-02 Introduction of iLogic	MFG-06 Inventor Publisher R1	CM/IT-03 Basics to Advanced FlexLM	CM/IT-06 Project Planning
11:00-11:50	MFG-04 Getting the Most Out of Frame Analysis	MFG-12 AutoCAD Ribbon Interface Unwrapped	CM/IT-04 Network Deployments of Autodesk Software	
12:00-12:50	Lunch			
1:00-1:50	MFG-01 Maximizing Inventor Performance in Large Models	BIM-02 Revit Structure in a ME Environment	CM/IT-02 Maximizing Computer Hardware	
2:00-2:50	MFG-10 Customizing the Inventor 2011 Content Center	MFG-07 Creating Animations for Sales & Marketing	DM-02 Vault "Tips & Tricks"	CM/IT-05 Controlling the Inventor and AutoCAD API's
3:00-3:50	MFG-03 Getting Started with Algor MES	MFG-11 Linking ACADE to Inventor Routed Systems	BIM-01 Digital Prototyping to BIM	CM/IT-01 Engineering Manager vs. CAD Manager
4:00-4:35		MFG-13 Exploring the AutoCAD Express Tools	MFG-09 A Manufacturer's Approach to Using Inventor SM	MFG-08 AutoCAD Solids vs. Inventor
4:40-5:00	Closing and Prize Giveaways (<i>must be present to win</i>)			

Please visit our newly redesigned www.mesa-cad.com for a registration form and updated information.



294 West Steuben St.
Pittsburgh, PA 15205

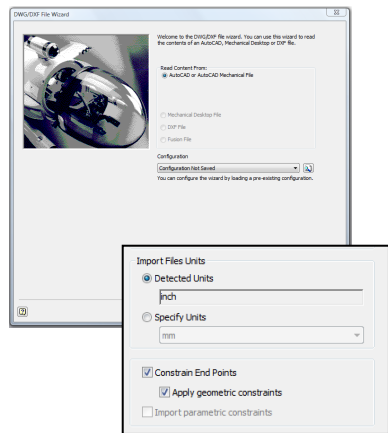
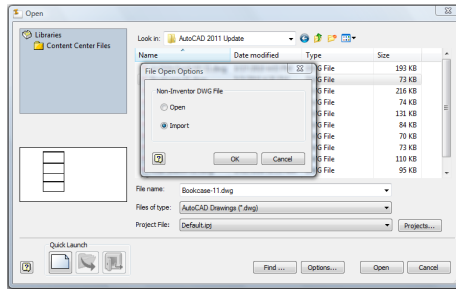


PRSRT STD
**US POSTAGE
PAID**
Permit No. 138
American Mailing Center
WASHINGTON, PA

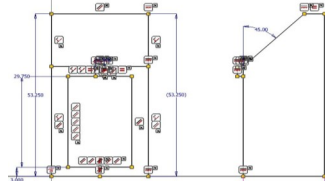
Importing an AutoCAD Sketch into Inventor (Part 2)

By Scott Grubb

The second method for bringing constrained AutoCAD geometry into Inventor is through the Open command. When we use the Open command for AutoCAD drawings, we will want to set the file search type to AutoCAD DWG files and set the “Options...” to Import so that the geometry will be imported into sketch environment. Then we can select Open and follow the DWG/DXF wizard.



Following the steps through the import wizard, verify that there is a check mark next to the “apply geometric constraints” setting on the Import Destination Options screen. Selecting finish then will bring in all of the geometric and dimensional constraints from the AutoCAD file.



Essential Inventor Detailing Features

By Jeffrey Chadwick

A few times a month, we receive calls from customers asking about one of the two crucial detailing features that are not part of the initial installation of Inventor Suite. If you haven't already guessed, they are the Revision Cloud and Spell Checker. Run a search with Window's Explorer on your program installation drive for “UserTools.msi” and install it from that location. Once you go into an IDW file and switch over to the “Add-Ins” tab, you will find the newly installed commands.

