



We are very proud to announce that we are now a reseller partner with...



Matrix 300+ Features

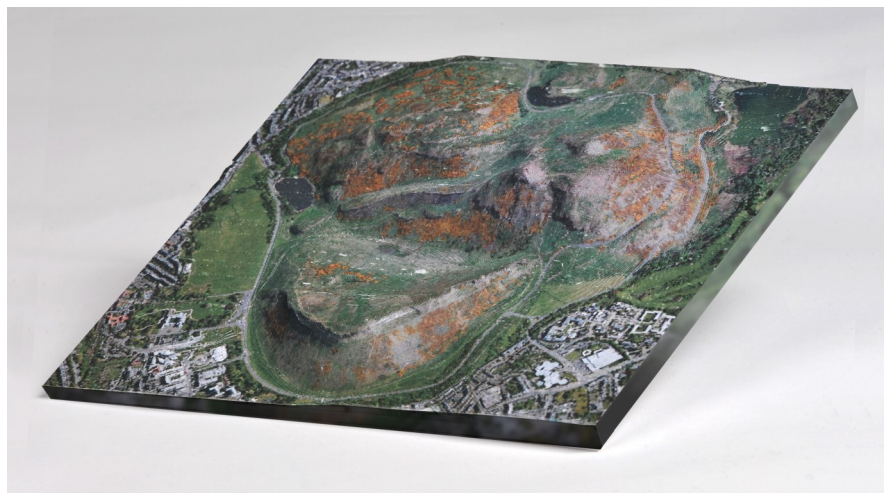
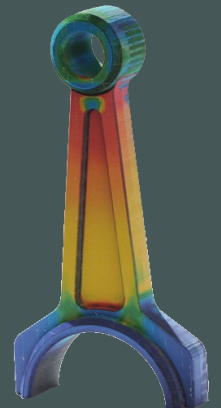
- **Unmatched Affordability** The material costs are a fraction of the cost of other technologies making it affordable for all environments.
- **Accessibility** The Matrix 300+ makes 3D printing truly accessible with material that you will find in your office supply shop.
- **Ease of Use** The Matrix 300+ has a user friendly interface making 3D printing easier than ever—as easy as printing on paper!
- **Eco-Friendly** The process uses Letter/A4 paper and a water-based adhesive which makes the output eco-friendly.
- **The Feel Factor** Models straight out of the Matrix are – “tough, durable and eco-friendly™” and meet a wide range of form fit and feel requirements.
- **High Resolution** can be achieved on the Matrix 300+ producing models that are both realistic and have fine detail.



Introducing Mcor IRIS Full Color 3D Printer

The new Mcor IRIS provides the lowest cost, most eco-friendly, full-color paper 3D printing solution. Providing the highest quality color and the finest detail, the IRIS prints photo-realistic 3D parts with the resolution you would expect from a high quality 2D color printer. Parts printed on the IRIS are robust and eco-friendly. What's more, the Iris is easy to use and office friendly – no dust and no fumes, so it easily fits into any office or school environment, making it the ideal rapid prototyping solution for professionals and student users alike.

- **True Color:** 1 million+ colors and 5760 x 1440 x 508dpi, delivering consistent, rich color
- **Office Friendly & Easy to Use:** Safe build materials, low noise level, no toxic waste.
- **Affordable:** Never has color 3D printing been so affordable – you can print models every day.



MESA will also be providing 3D Rapid Prototyping services in the very near future!



294 West Steuben Street
Pittsburgh, PA 15205

March's Training Special:

Inventor Advanced Assembly Modeling

(March 18, 19, & 20th - \$1,000!)

Course Description:

This course will cover different tools and strategies for top-down design for assembly creation. The course will utilize hands-on exercises representing real-world, industry-specific design scenarios to convey the topics.

After completing this course, students will be able to:

- Derive assemblies and parts
- Create Multi-body parts
- Utilize Layouts in the design process
- Create iMates and iAssemblies
- Use iLogic to automate segments of the design process
- Use Design Accelerators, such as Frame Generator
- Create Weldments

Prerequisites:

- > Inventor Essentials or 1 year of using Inventor regularly.
- > Inventor Advanced Part Modeling is only recommended.

Please contact your MESA salesperson to sign up.

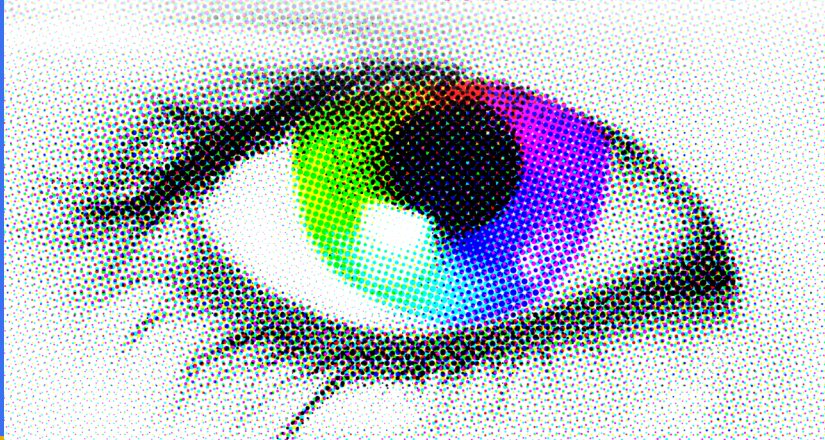
My conversion to iLogic has begun... by Jeffrey Chadwick

I've always been reluctant to attempt anything with iLogic, mainly because I have a fear of programming... and clowns (but that is for another write-up). While reading the "From the Trenches with Autodesk Inventor" blog, I came across a very useful entry titled "iLogic: Delete All Sick Assembly Constraints". Go to our Publications page on our website to download a short video that shows how to use this tool from scratch.

Get Color Vision
with the



mcor iris
TRUE COLOR 3D PRINTING



EXPERIENCE LOWEST COST,
HIGHEST QUALITY, MOST ECO-FRIENDLY,
TRUE COLOR 3D PRINTING.

ONE 3D PRINTER – 1 MILLION COLORS
PREPARE TO BE WOWED!

DESIGN. PRINT. WOW! WITH THE MCOR IRIS